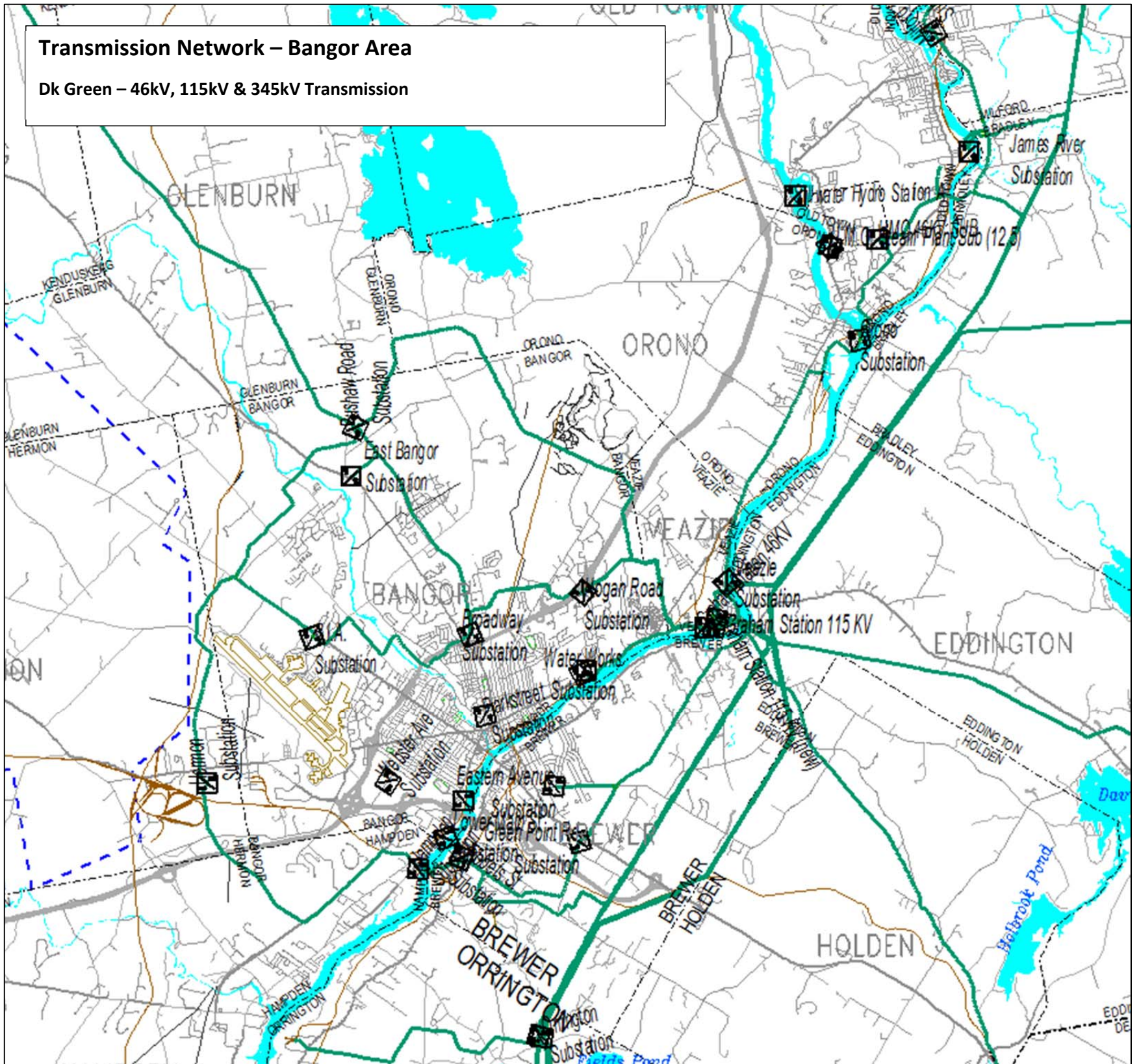


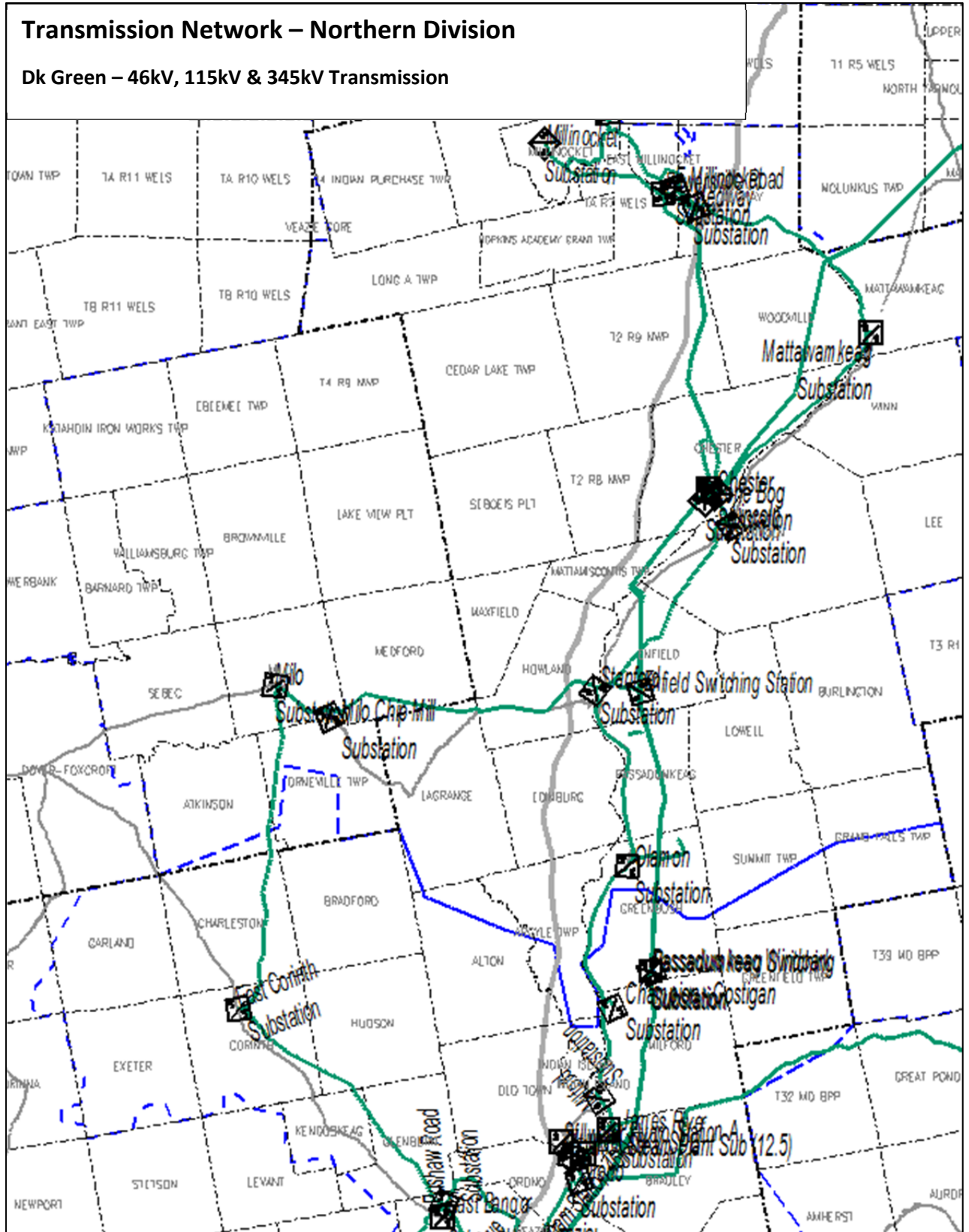
Transmission Network – Bangor Area

Dk Green – 46kV, 115kV & 345kV Transmission



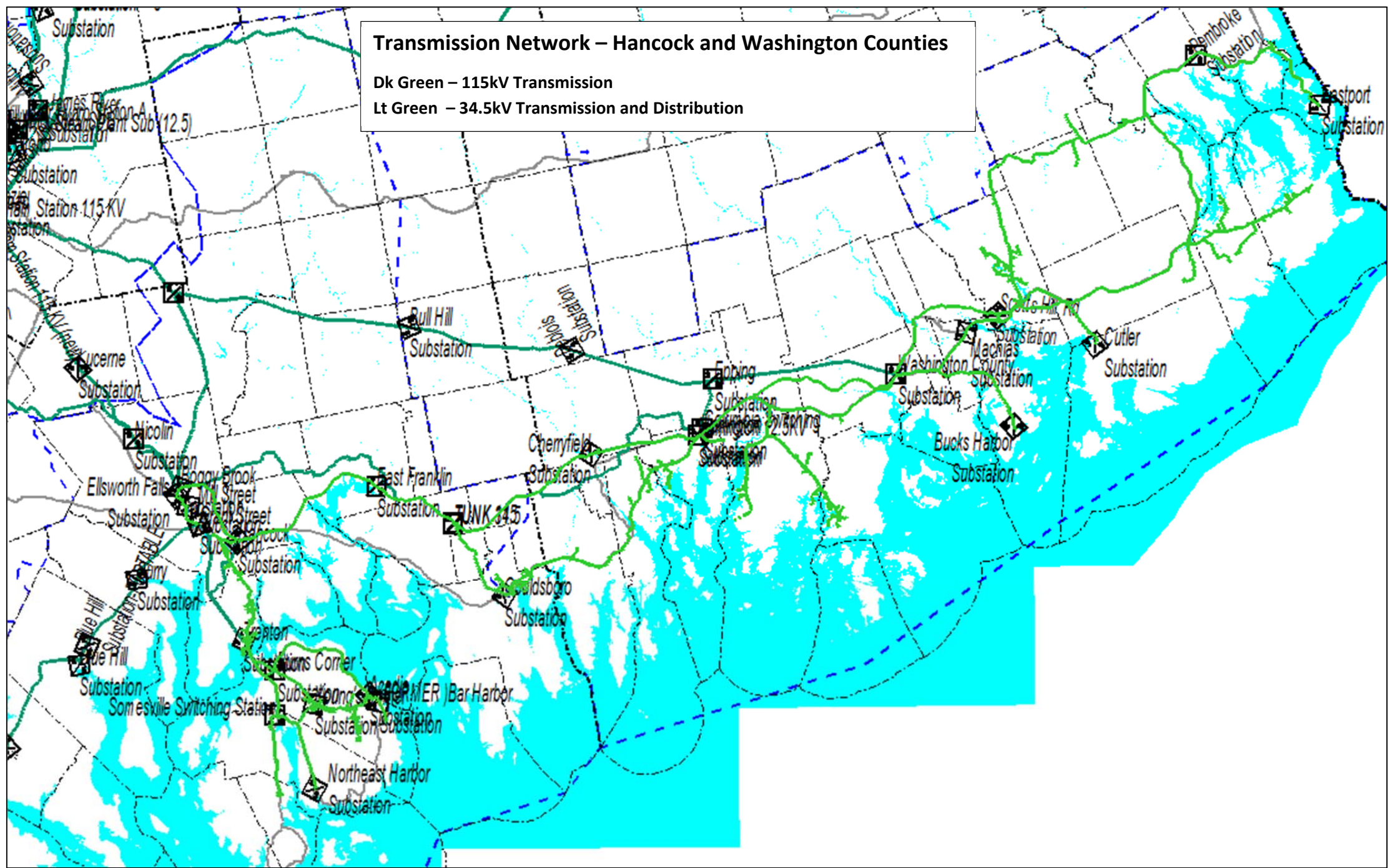
Transmission Network – Northern Division

Dk Green – 46kV, 115kV & 345kV Transmission

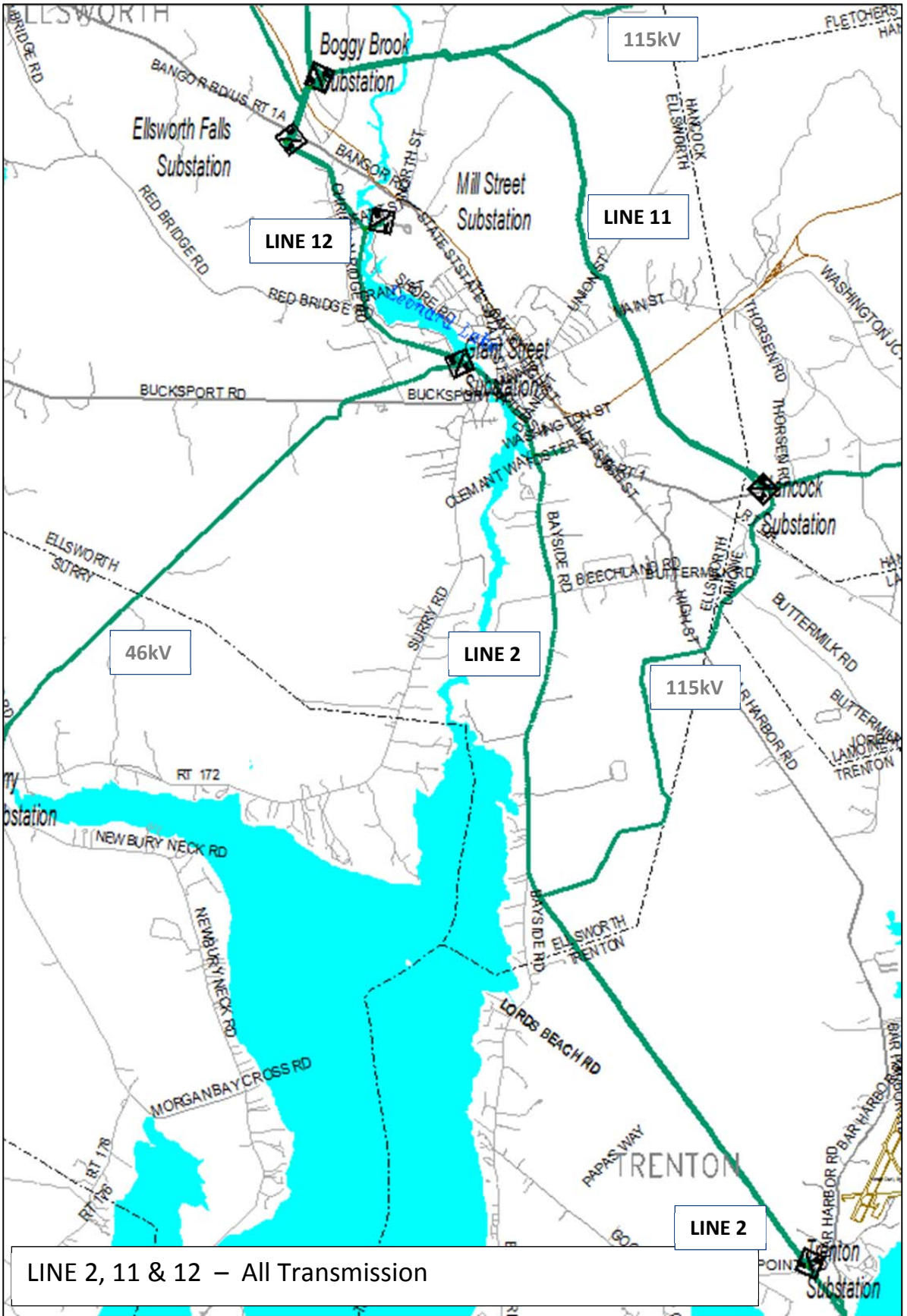


Transmission Network – Hancock and Washington Counties

Dk Green – 115kV Transmission
Lt Green – 34.5kV Transmission and Distribution



Transmission vs Distribution maps for 34.5kV lines shown on next pages.



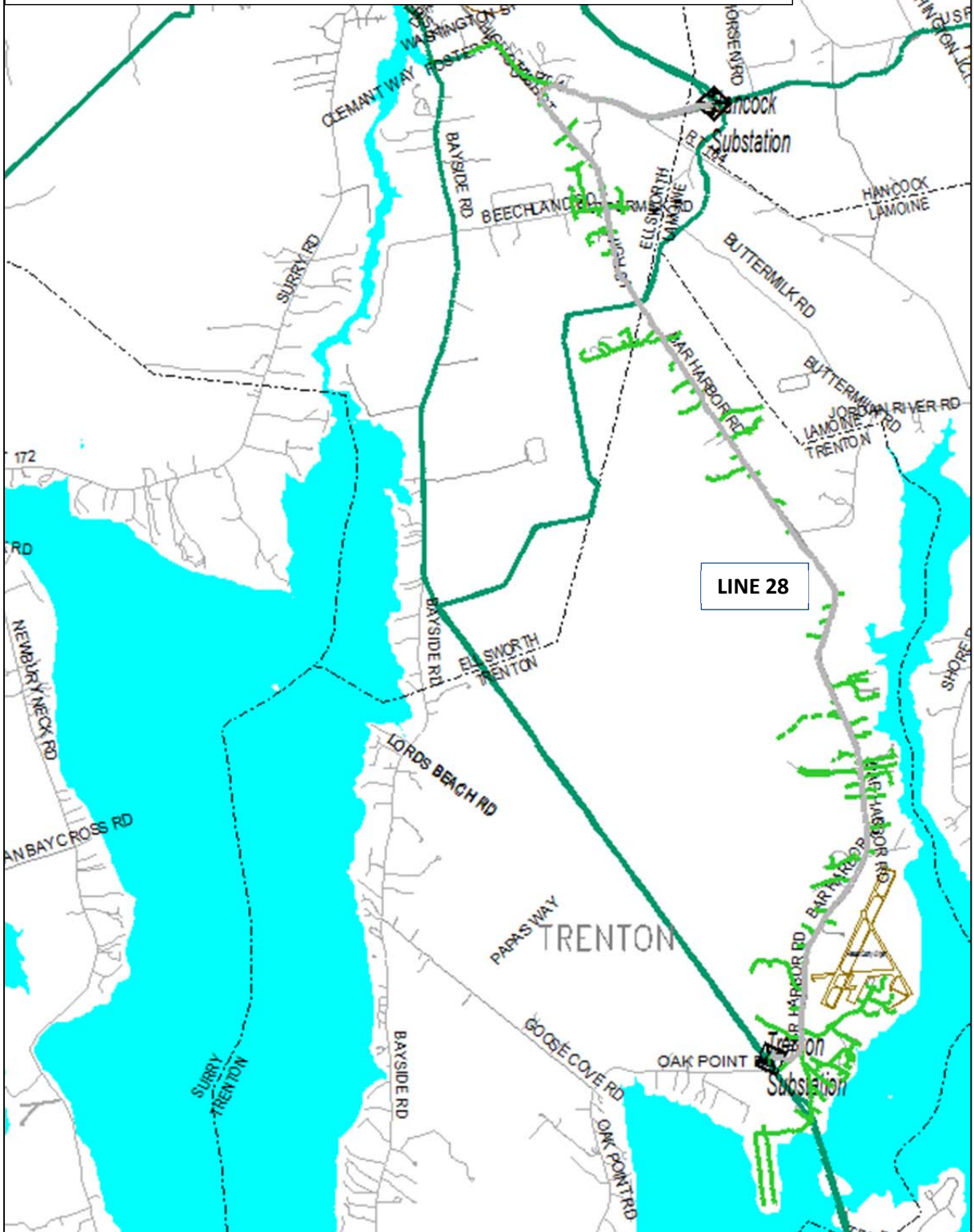
LINE 2, 11 & 12 – All Transmission

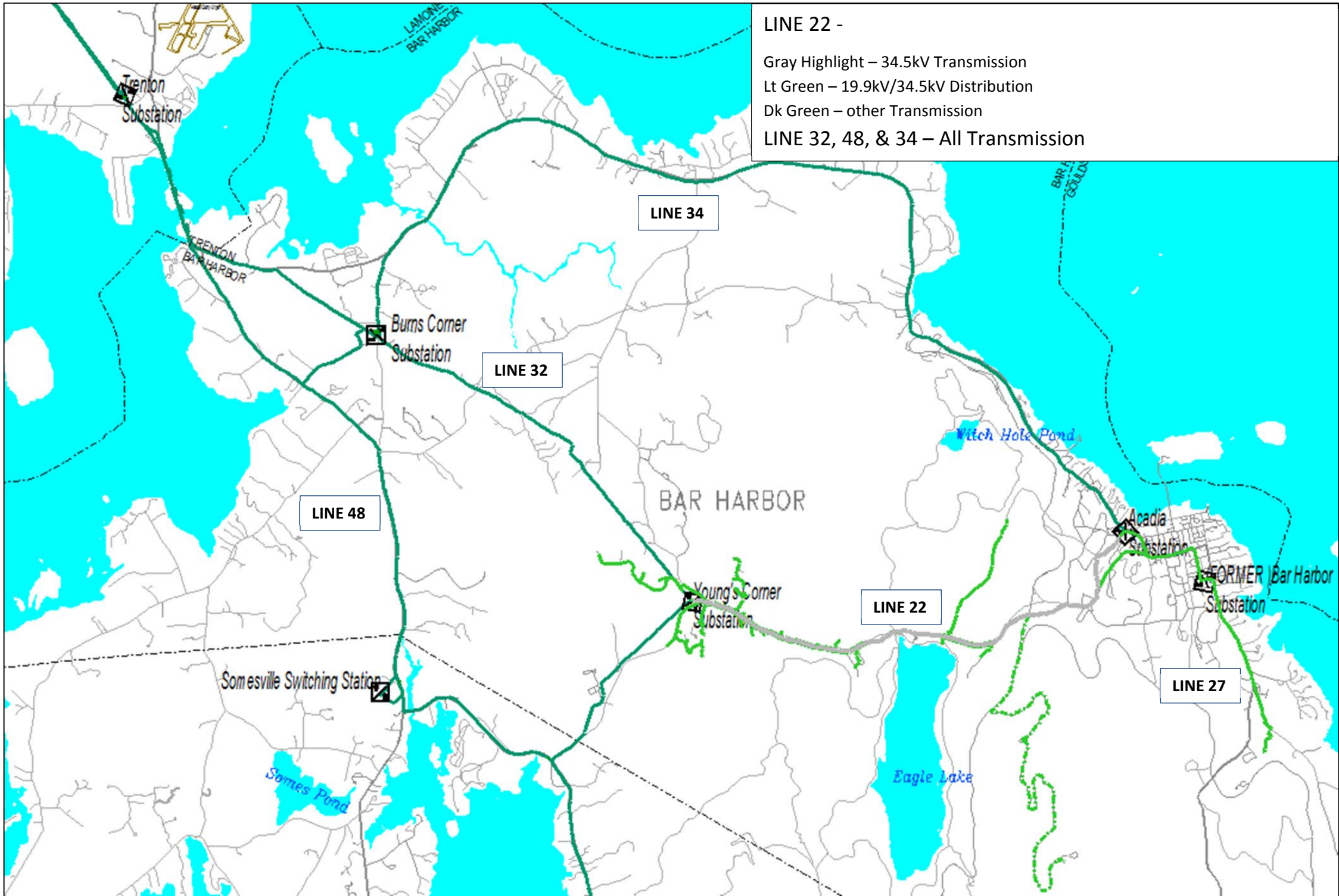
LINE 28– Transmission versus Distribution

Gray Highlight – 34.5kV Transmission

Lt Green – 19.9kV/34.5kV Distribution

Dk Green – other Transmission





LINE 22 -
Gray Highlight – 34.5kV Transmission
Lt Green – 19.9kV/34.5kV Distribution
Dk Green – other Transmission
LINE 32, 48, & 34 – All Transmission

LINE 34

LINE 32

LINE 48

LINE 22

LINE 27

Trenton Substation

Burns Corner Substation

Young's Corner Substation

Acadia Substation

FORMER Bar Harbor Substation

Somesville Switching Station

Somes Pond

Witch Hole Pond

Eagle Lake

BAR HARBOR

LAMORNE BAR HARBOR

TRENTON BAR HARBOR

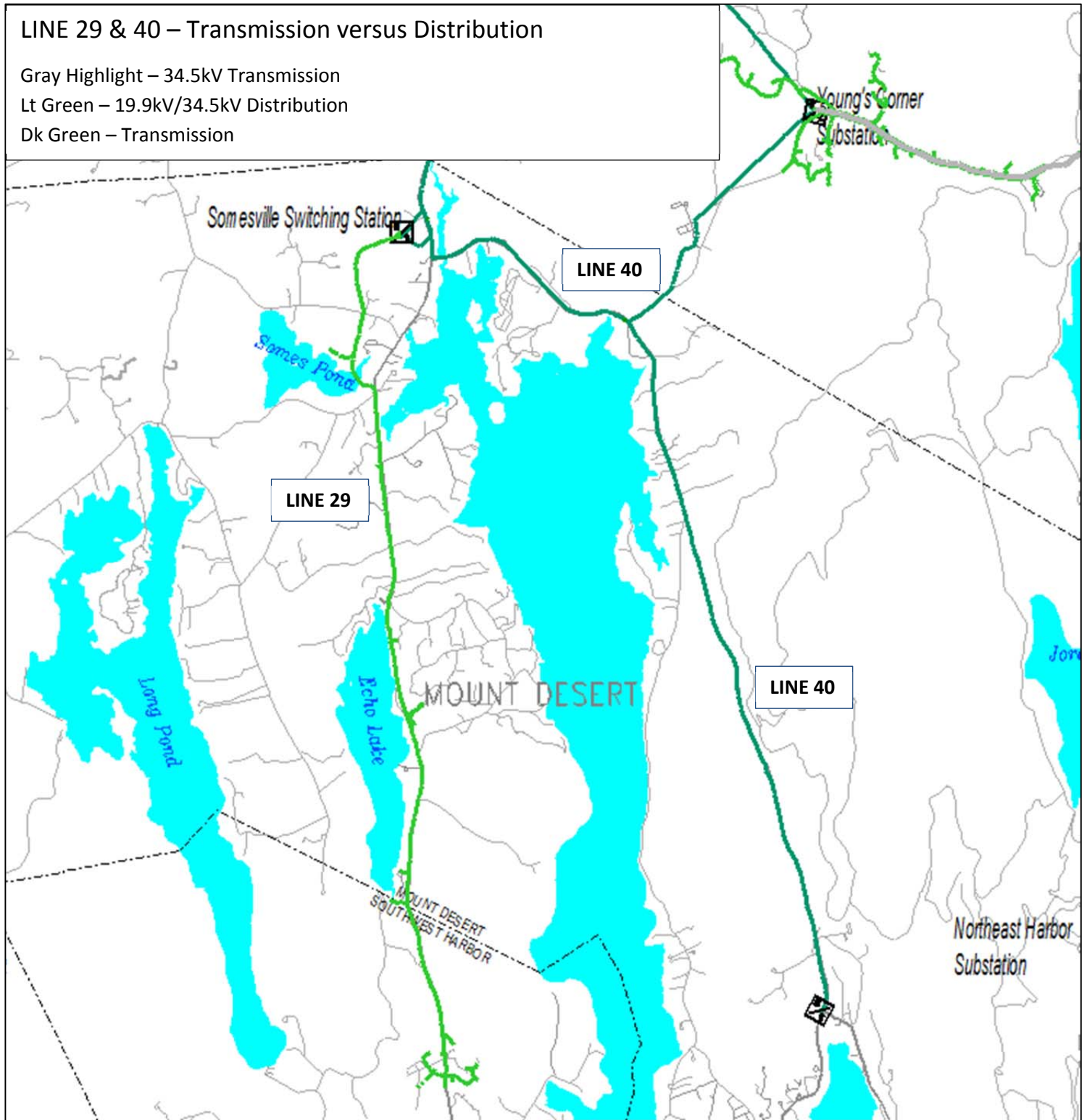
BAR GOULD

LINE 29 & 40 – Transmission versus Distribution

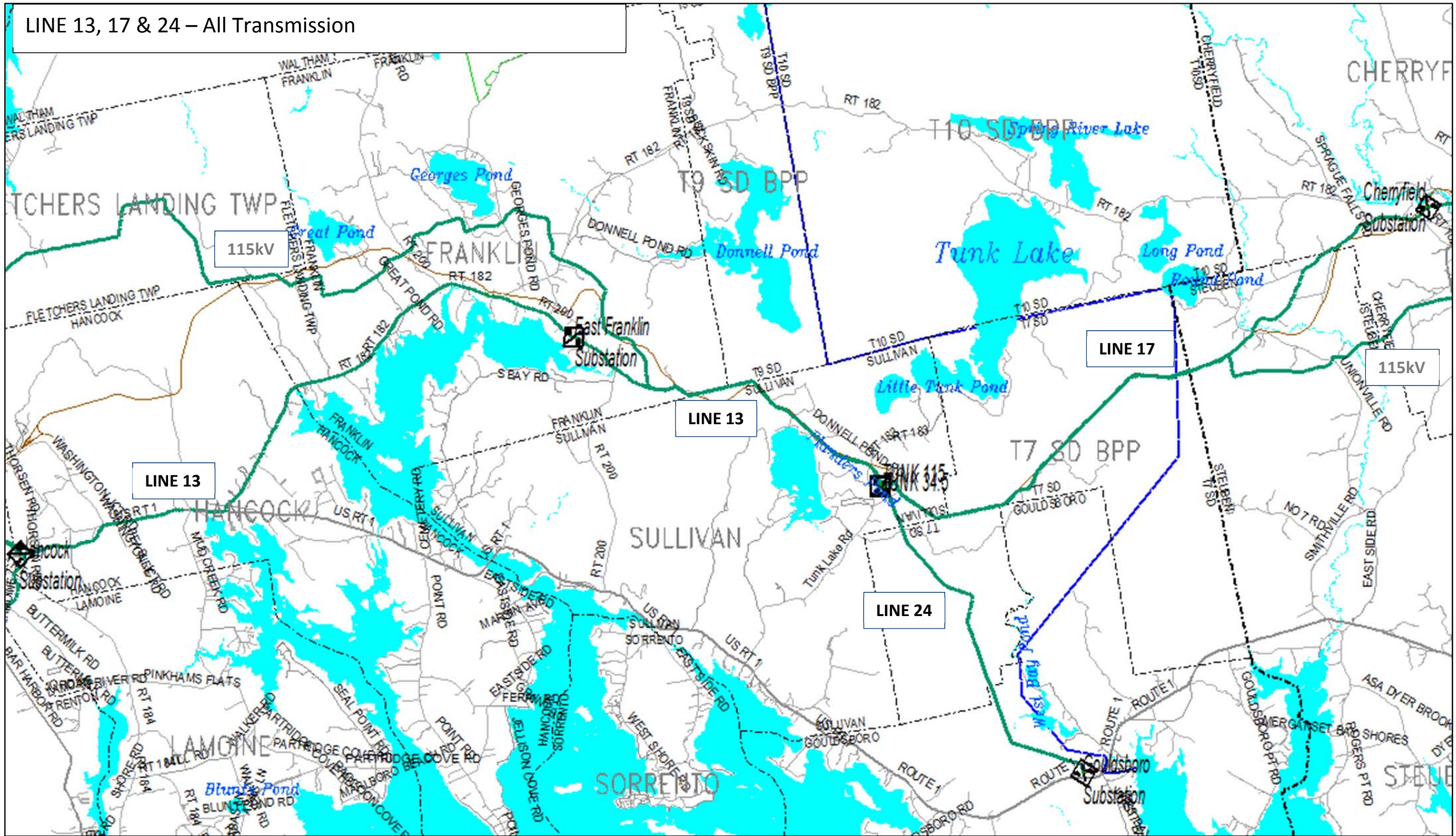
Gray Highlight – 34.5kV Transmission

Lt Green – 19.9kV/34.5kV Distribution

Dk Green – Transmission

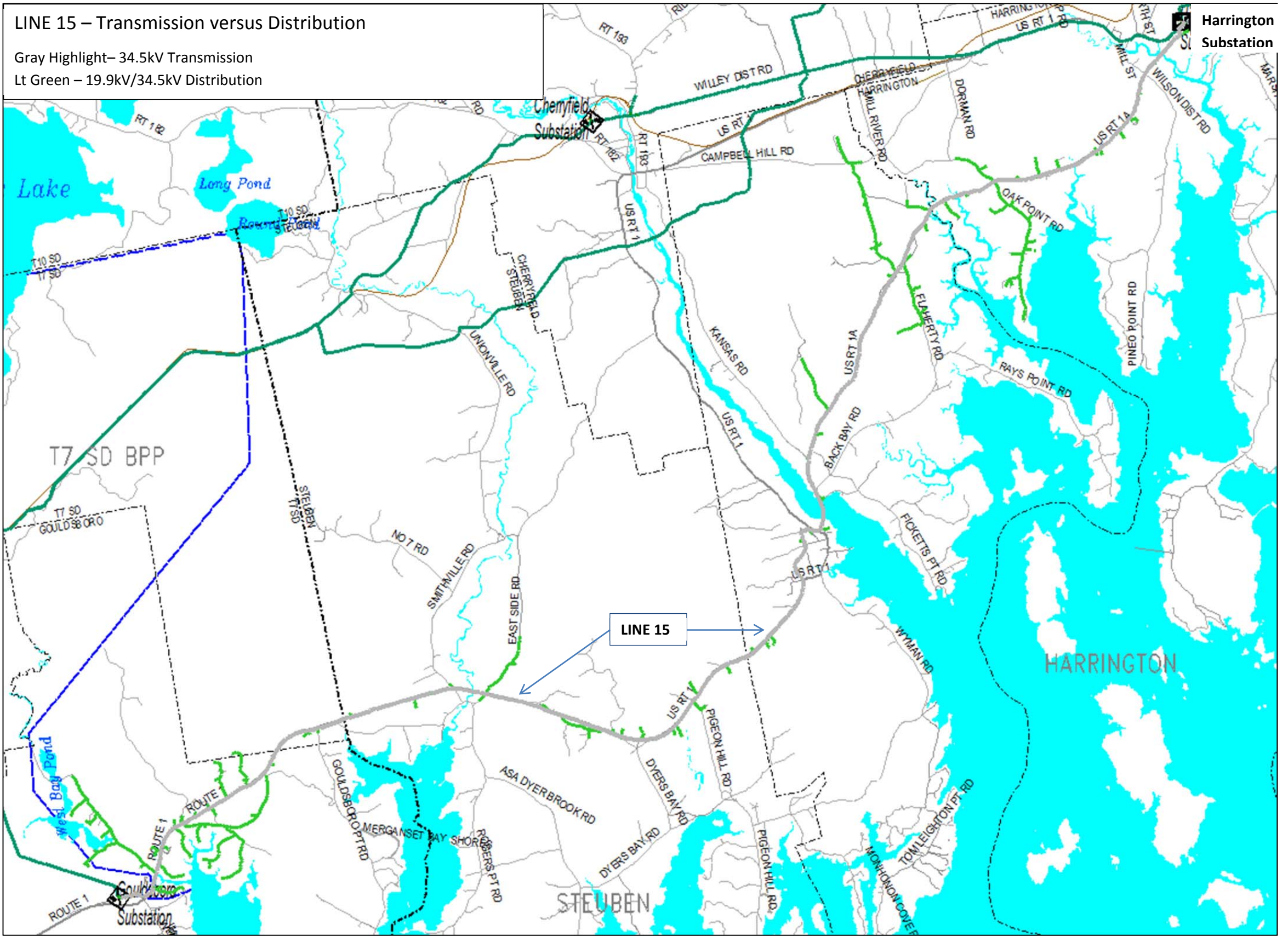


LINE 13, 17 & 24 – All Transmission



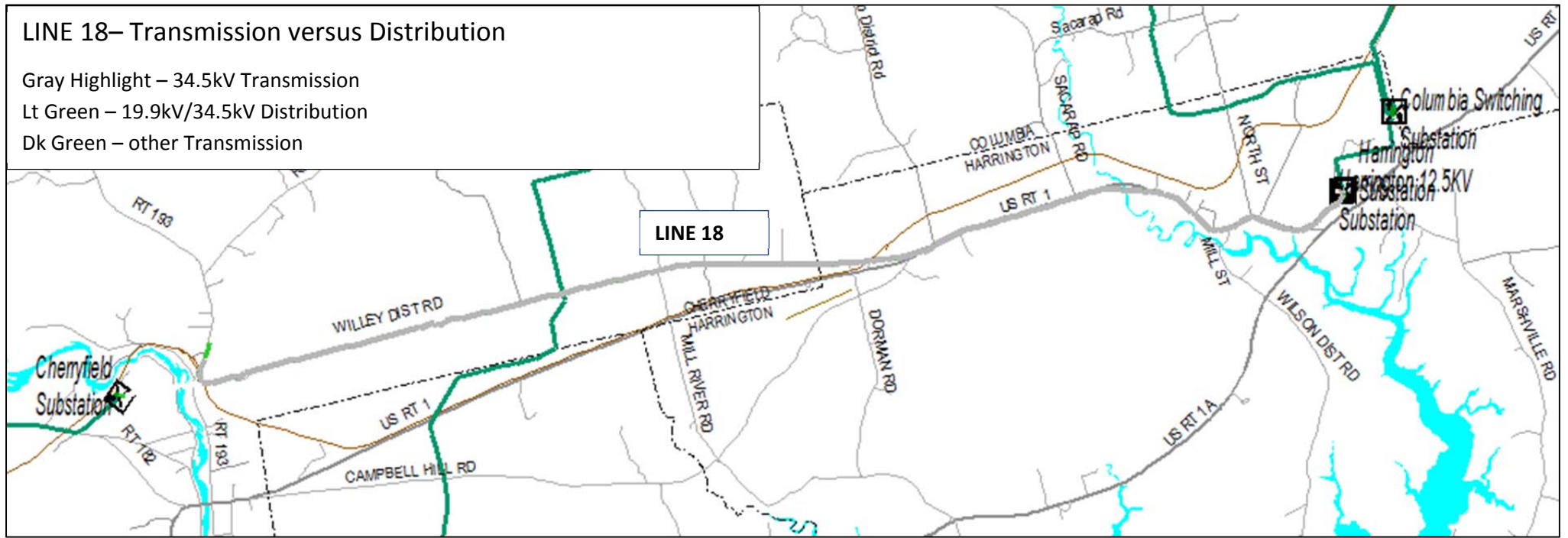
LINE 15 – Transmission versus Distribution

Gray Highlight – 34.5kV Transmission
Lt Green – 19.9kV/34.5kV Distribution



LINE 18– Transmission versus Distribution

- Gray Highlight – 34.5kV Transmission
- Lt Green – 19.9kV/34.5kV Distribution
- Dk Green – other Transmission

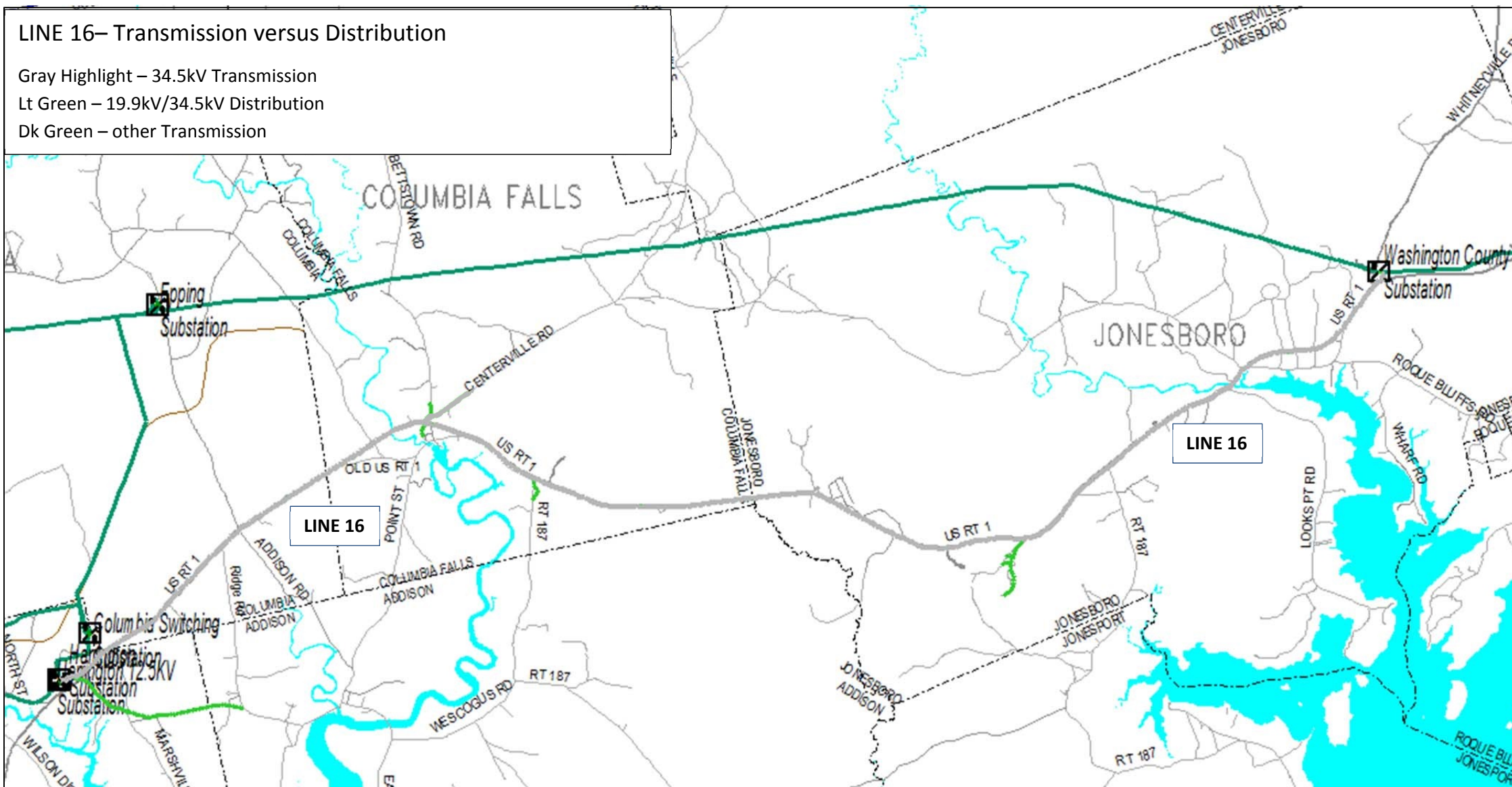


LINE 16– Transmission versus Distribution

Gray Highlight – 34.5kV Transmission

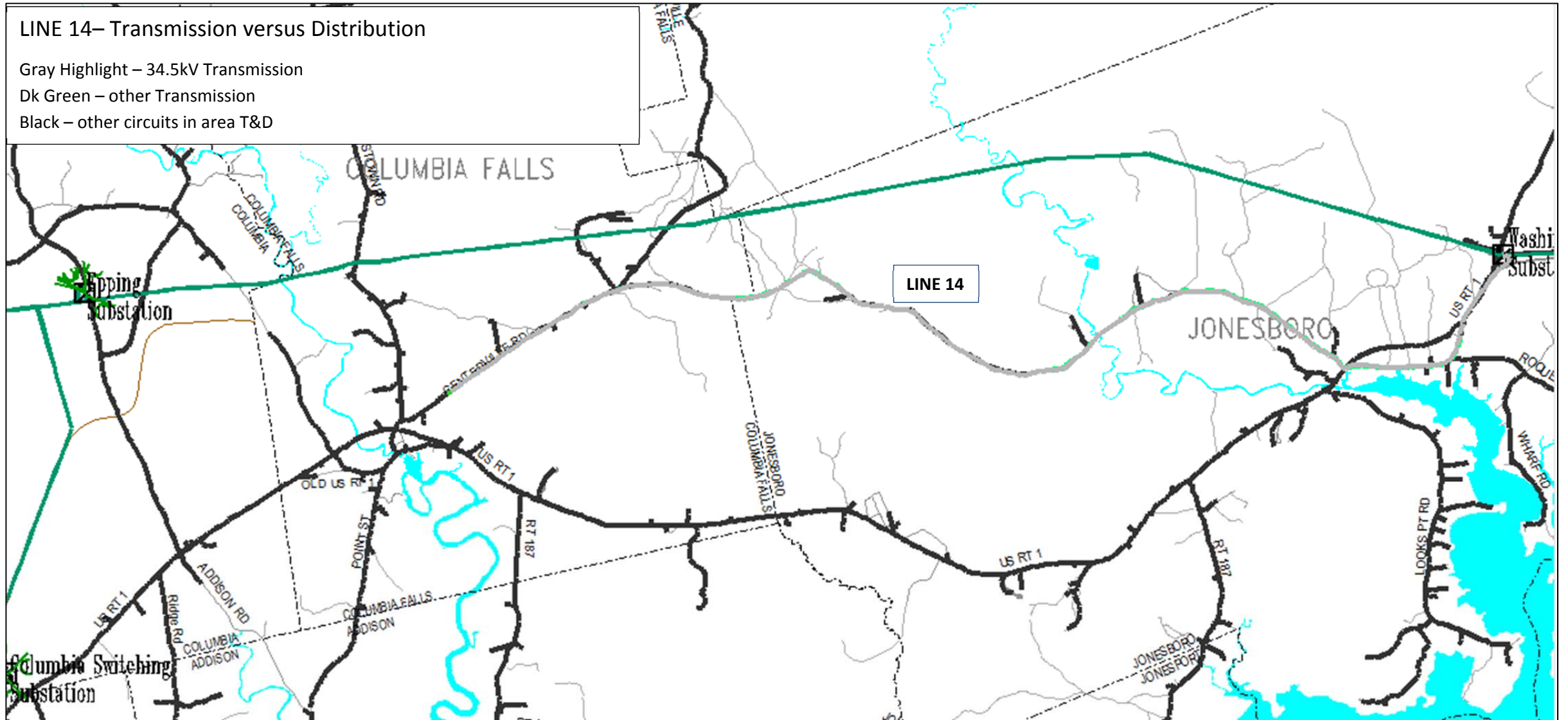
Lt Green – 19.9kV/34.5kV Distribution

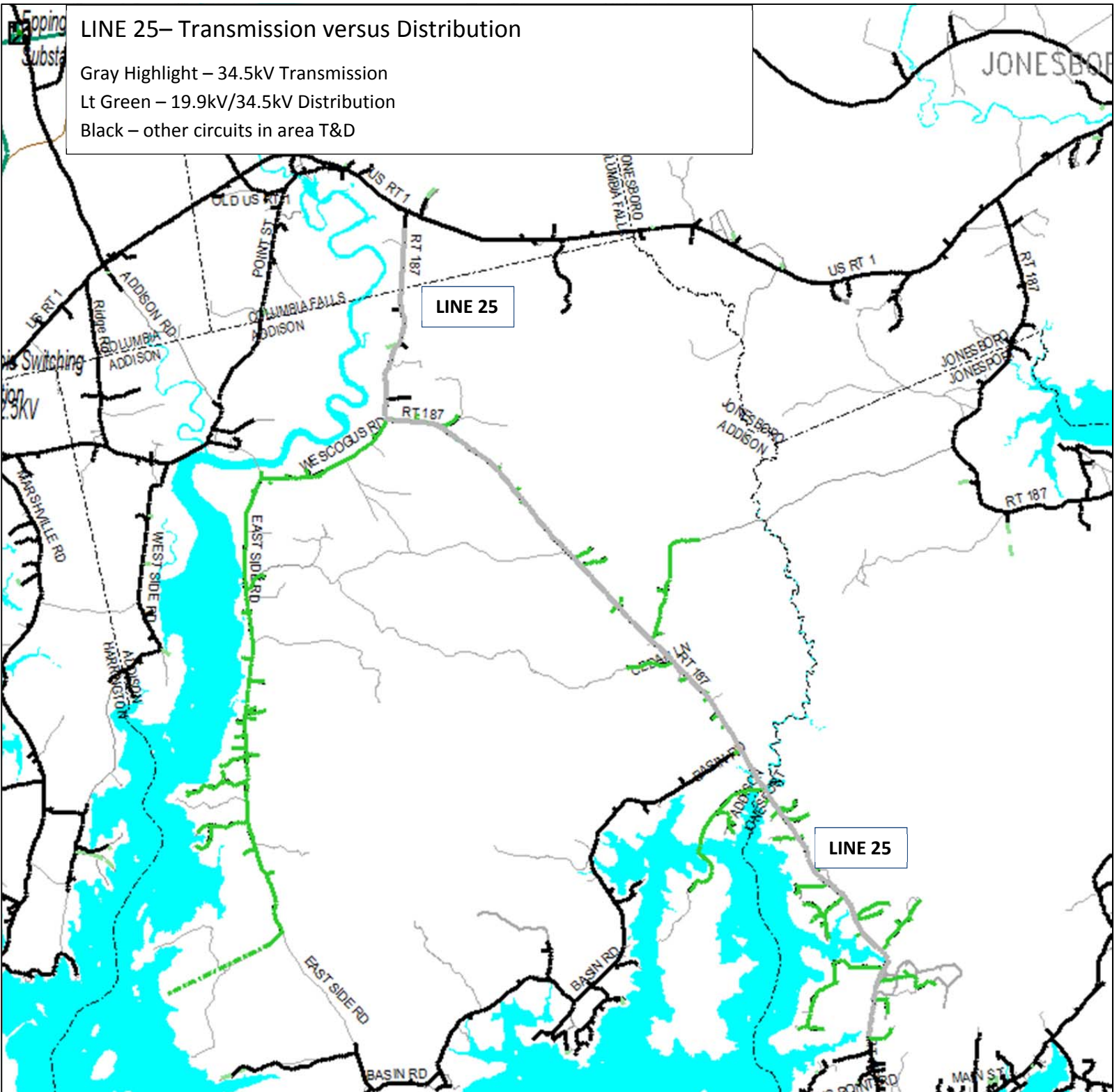
Dk Green – other Transmission



LINE 14- Transmission versus Distribution

- Gray Highlight – 34.5kV Transmission
- Dk Green – other Transmission
- Black – other circuits in area T&D

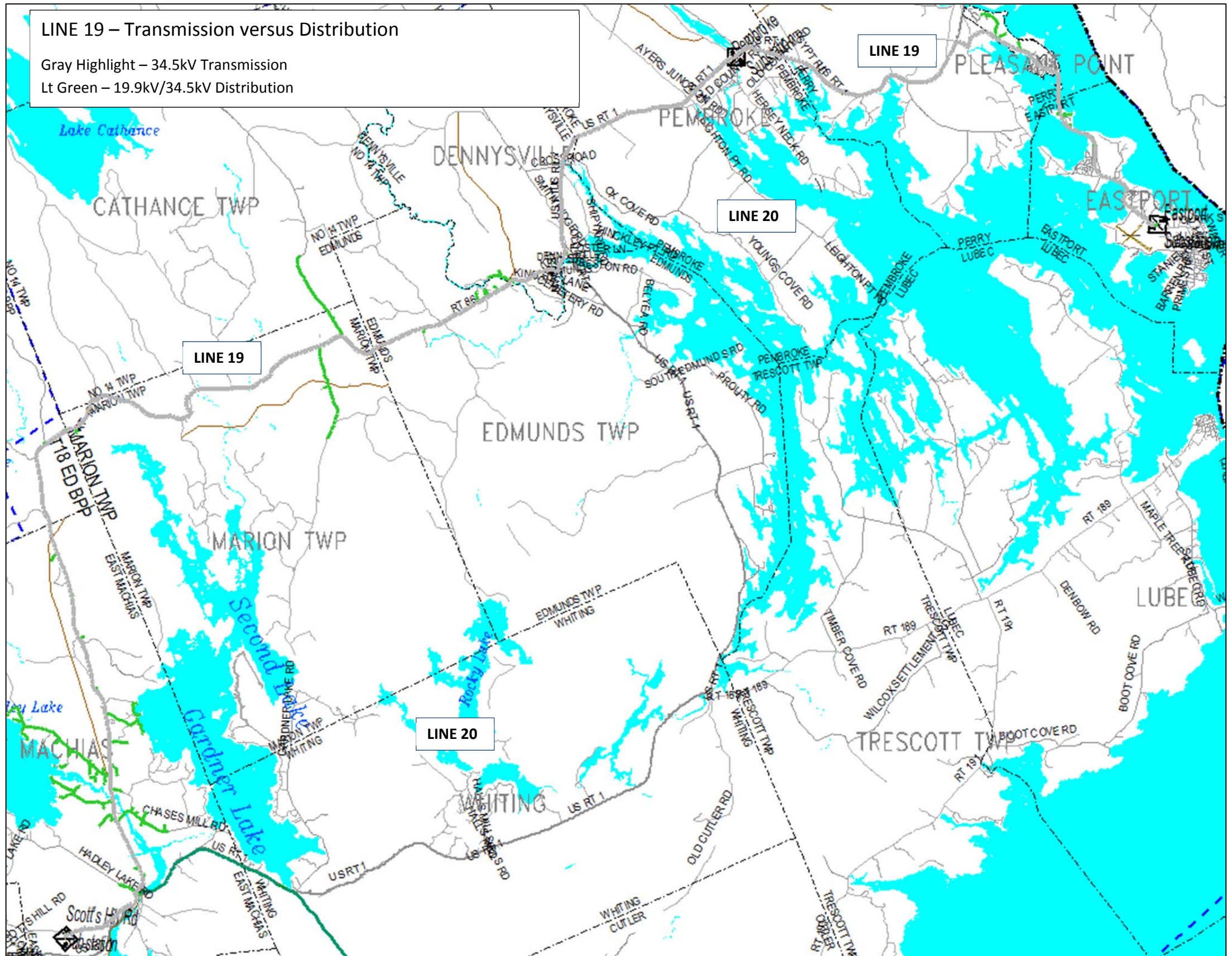




LINE 19 – Transmission versus Distribution

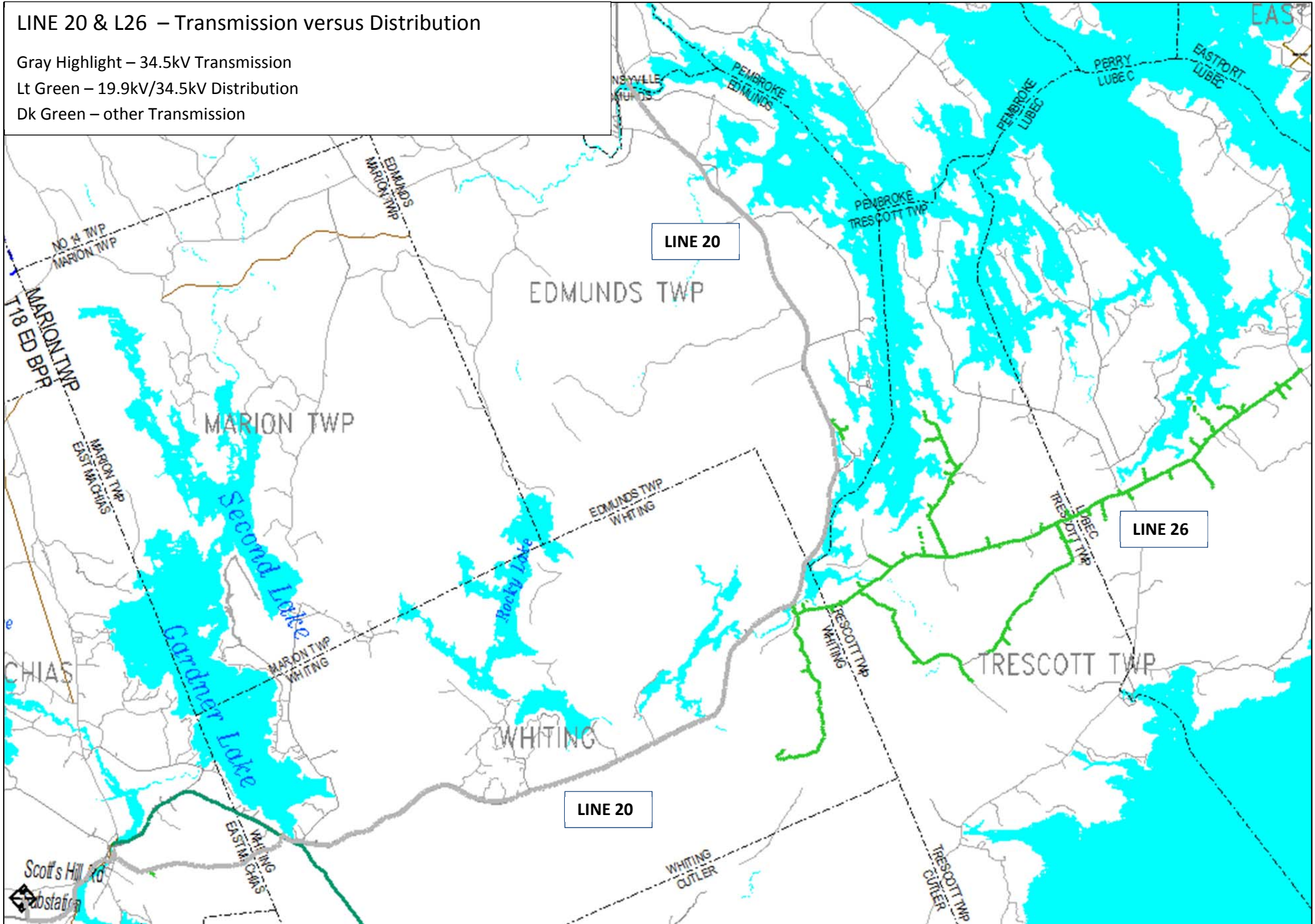
Gray Highlight – 34.5kV Transmission

Lt Green – 19.9kV/34.5kV Distribution



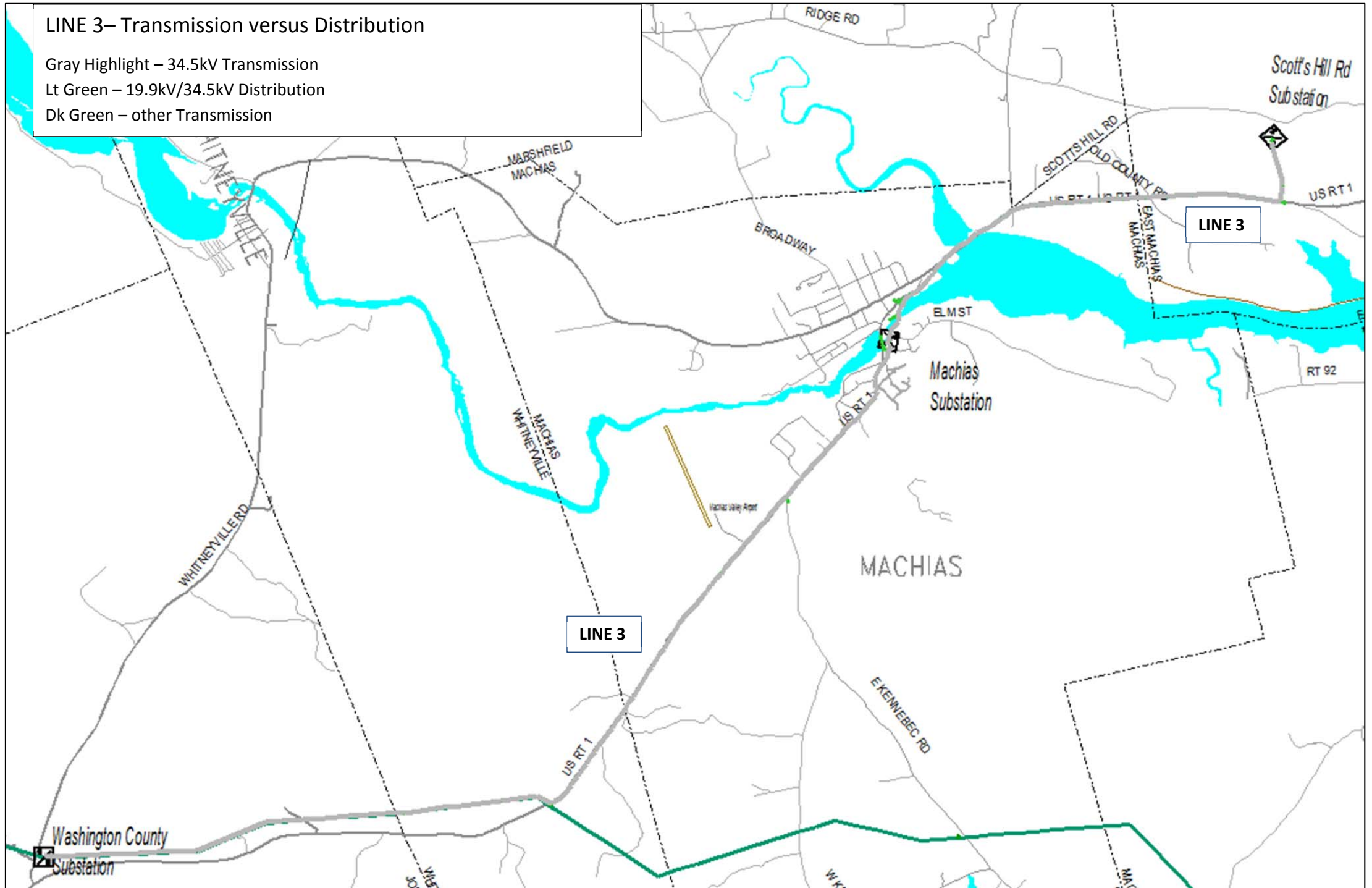
LINE 20 & L26 – Transmission versus Distribution

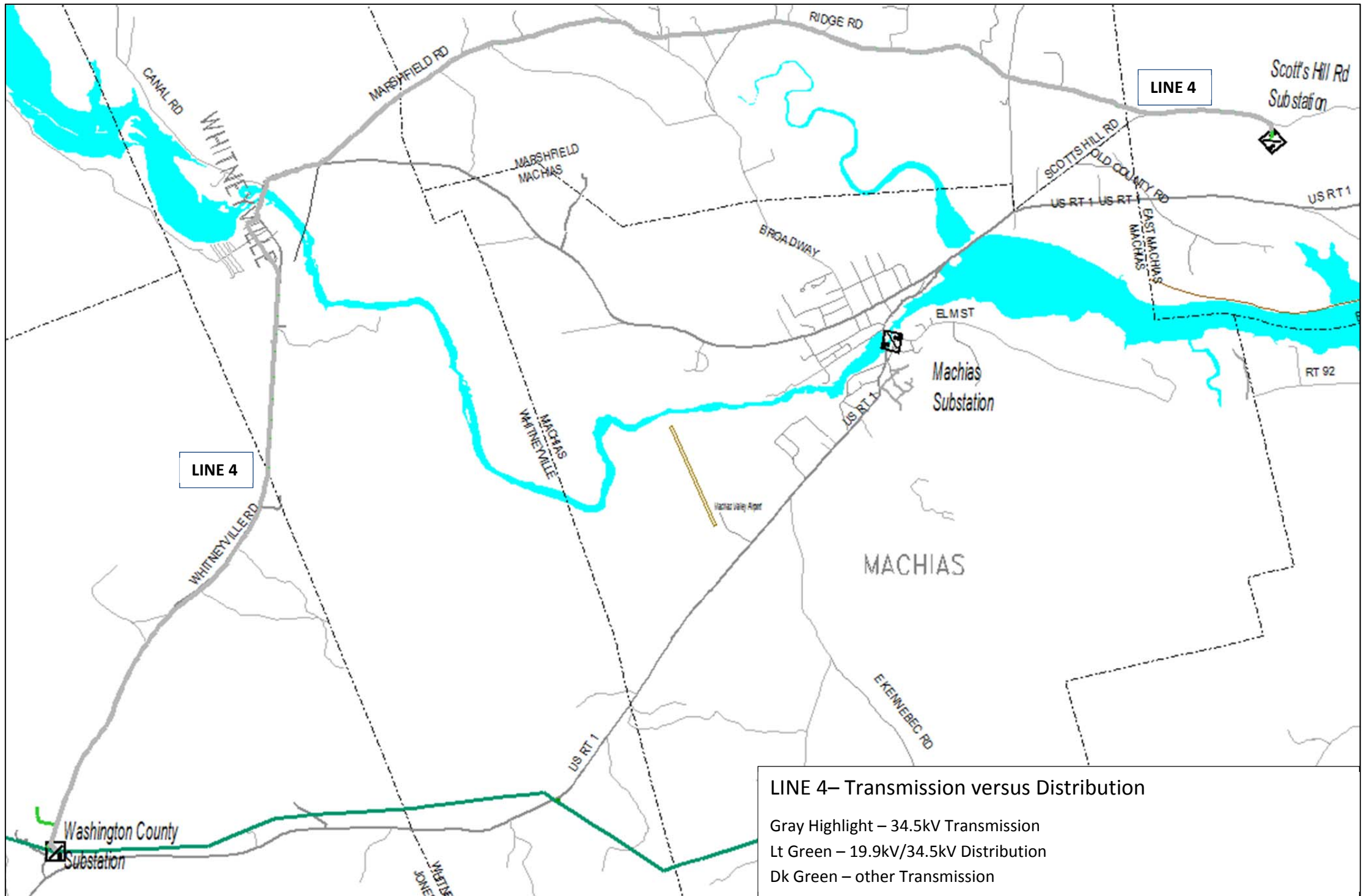
- Gray Highlight – 34.5kV Transmission
- Lt Green – 19.9kV/34.5kV Distribution
- Dk Green – other Transmission



LINE 3– Transmission versus Distribution

- Gray Highlight – 34.5kV Transmission
- Lt Green – 19.9kV/34.5kV Distribution
- Dk Green – other Transmission



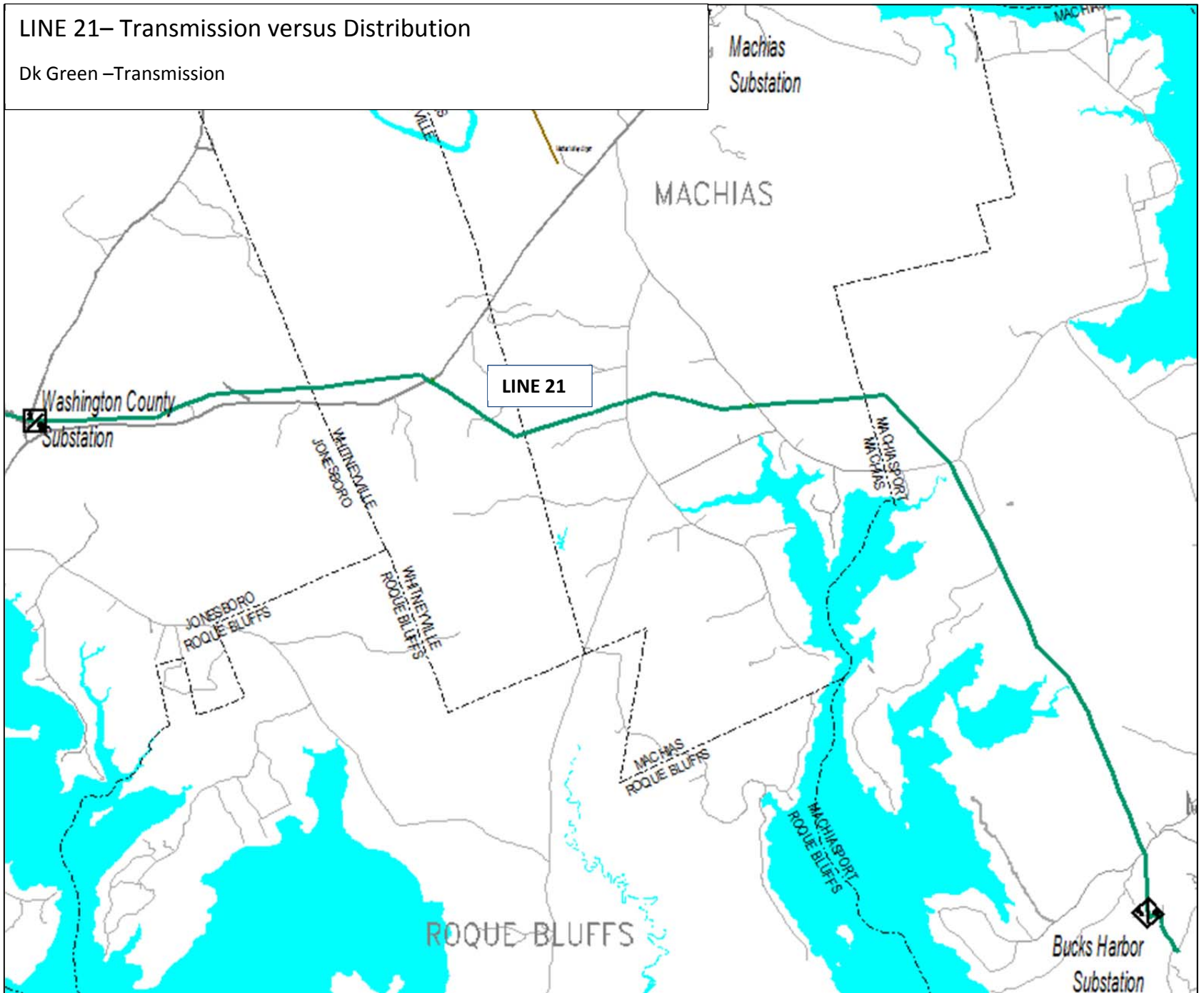


LINE 4– Transmission versus Distribution

Gray Highlight – 34.5kV Transmission
 Lt Green – 19.9kV/34.5kV Distribution
 Dk Green – other Transmission

LINE 21– Transmission versus Distribution

Dk Green –Transmission



LINE 23 – All Transmission

